



# Witness

*Firsthand Accounts of the Largest  
Volcanic Eruption in the Twentieth Century*



◀ Front cover:

“Tourist Party at the base of Mt. Katmai,  
on the way to the Crater” Photo taken by  
geologist Clarence N. Fenner, July 23, 1923

◀◀ Back Cover:

“Foliage” Katmai National Park and Preserve,  
photo courtesy of Gary Freeburg.

▶ Opposite:

“Novarupta”

Katmai National Park and Preserve,  
photo courtesy of Gary Freeburg.

Image credits:

Alaska Russian America, National Board of  
Antiquities Helsinki, Finland, 2nd edition 1990,  
and Glory Remembered: Wooden Headgear  
of Alaska Sea Hunters, Lydia T. Black, Friends  
of the Alaska State Museum 1991.

By Jeanne M. Schaaf

Historic photographs:

Kathryn Myers, Collections Manager

Design and layout:

Molly Beich, Northwind Prepress

April 2004

## NATIONAL PARK SERVICE

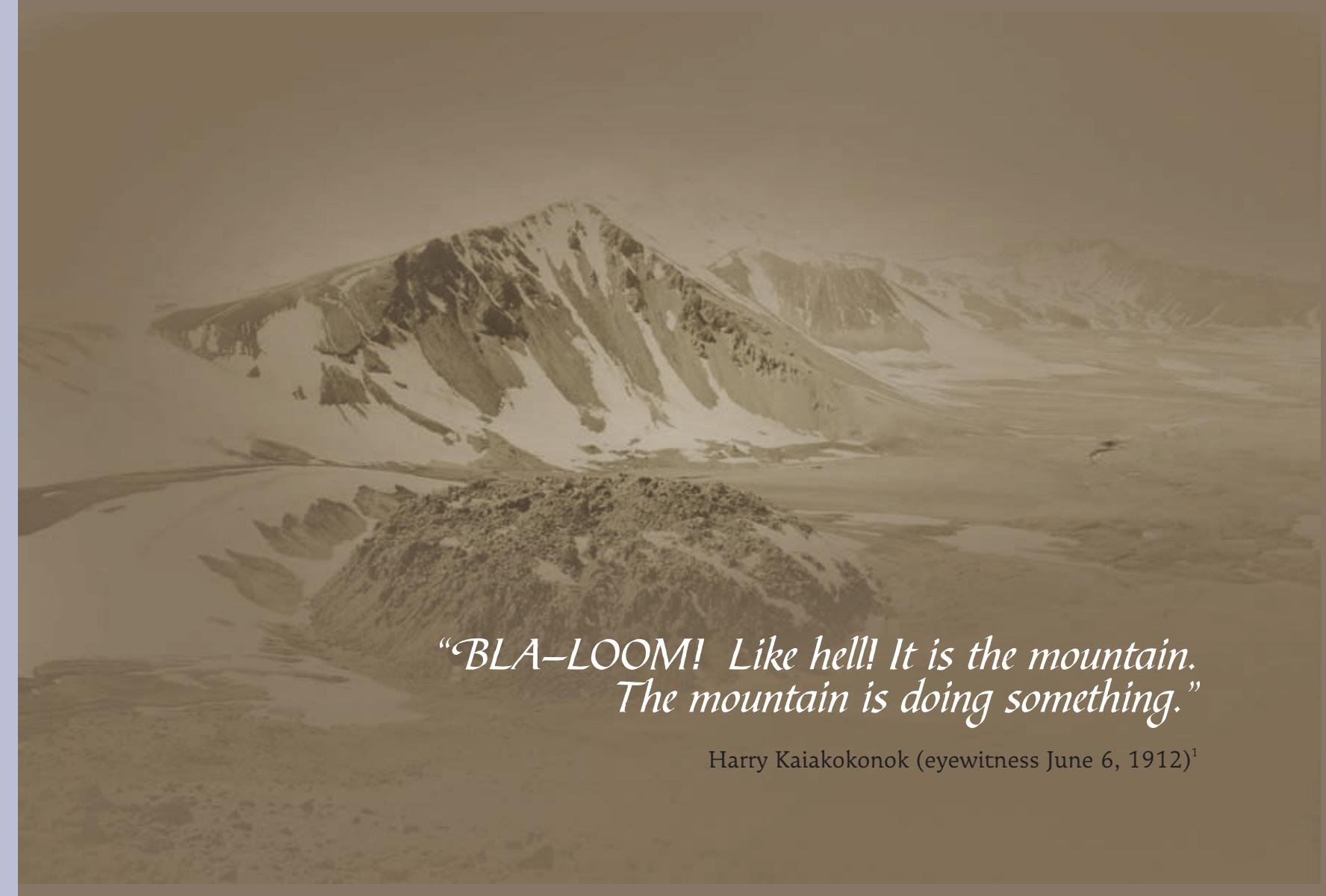
Katmai National Park and Preserve/  
Aniakchak National Monument and Preserve  
Lake Clark-Katmai Studies Center  
4230 University Drive, Suite 311  
Anchorage, Alaska 99508



The Lake Clark-Katmai Studies Center, established in February 1999, is a research and curatorial facility for the museum collections from Katmai National Park and Preserve, Lake Clark National Park and Preserve, Aniakchak National Monument and Preserve, and the Alagnak Wild River. The Center supports the Cultural Resource program for these parks with responsibilities that include stewardship of historic buildings, museum collections, archeological sites, cultural landscapes, oral and written histories, and ethnographic resources.

Our mission is to identify, evaluate and preserve the cultural resources of the park areas and to bring an understanding of these resources to the public. Congress has mandated that we preserve these resources because they are important components of our national and personal identity.

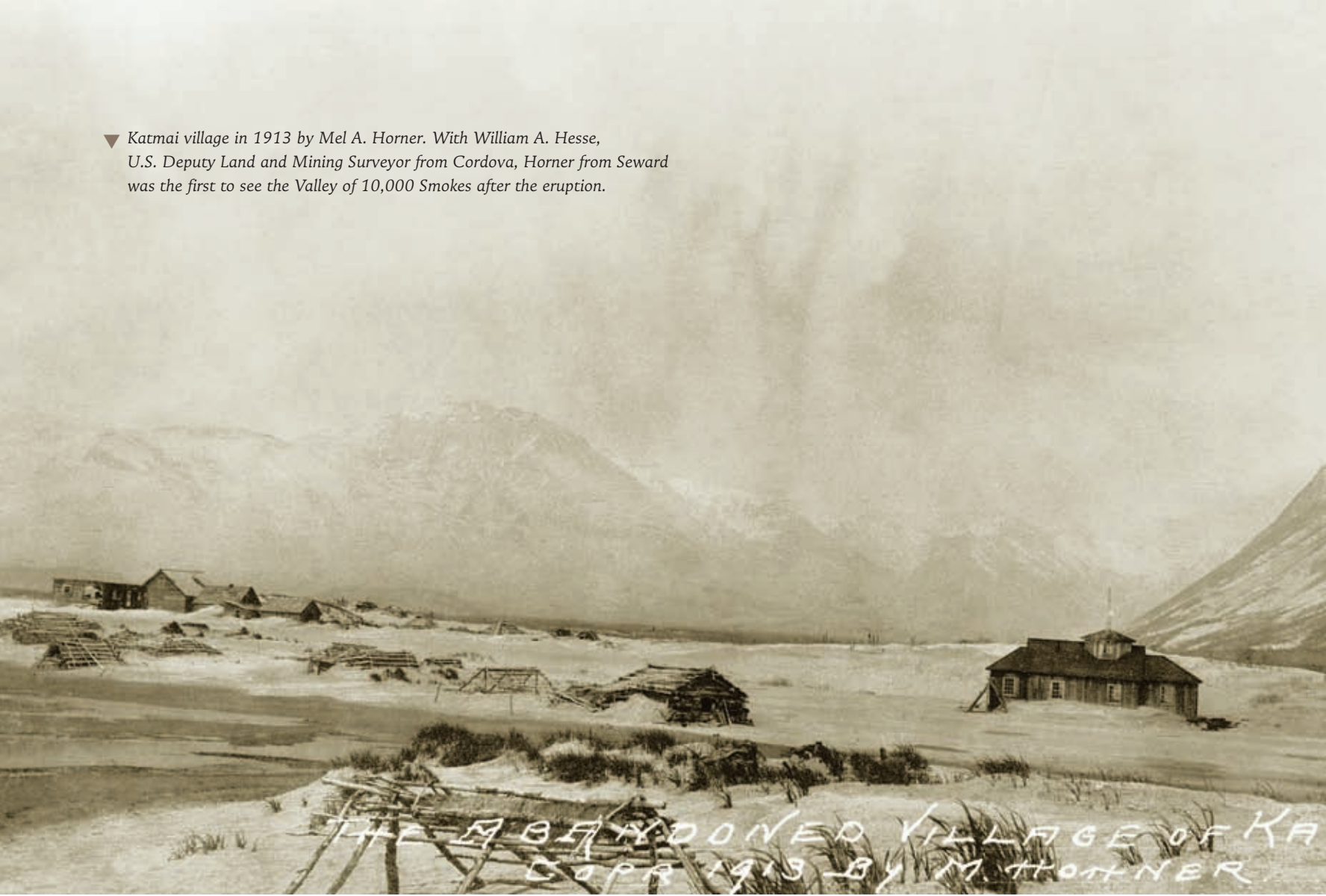
Mention of trade names of commercial products does not constitute endorsement or recommendations for use.



*“BLA-LOOM! Like hell! It is the mountain.  
The mountain is doing something.”*

Harry Kaiakokonok (eyewitness June 6, 1912)<sup>1</sup>

▼ Katmai village in 1913 by Mel A. Horner. With William A. Hesse, U.S. Deputy Land and Mining Surveyor from Cordova, Horner from Seward was the first to see the Valley of 10,000 Smokes after the eruption.



THE ABANDONED VILLAGE OF KATMAI  
COPY 1913 BY M. HORNER

# Witness

There is a long-standing bond between Katmai's volcanoes and resident people. In the 10,000 years since the close of the last Ice Age, there have been at least seven explosive eruptions and many minor eruptions within the Katmai volcanic cluster.<sup>2</sup> These events are evident in the archeological sites throughout the region, where tephra are layered between prehistoric house floors and camp surfaces. Witnessing the explosion of a mountain within very close proximity was not an unknown experience for people living on the Alaska Peninsula when Novarupta volcano unleashed one of the five largest eruptions in recorded history. Although an eruption of this scale had not happened in their lifetime, ancestral knowledge of immeasurable antiquity instructed them through oral tradition:

*And then one old man from Katmai...started hollering and telling people about their water... "Put away as much water as you can and store it, reserve it. Wherever ashes come down, there will be no water to drink anywhere. ...Turn your boats upside down. They will be filled up with ash." He knows everything, that old fellow.<sup>3</sup>*



▲ “Orthodox Chapel at Katmai, 1915, showing effects of flood”  
Photo courtesy of National Geographic Society.

▶ “Near Six Mile”  
Photo courtesy of Gary Freeburg.

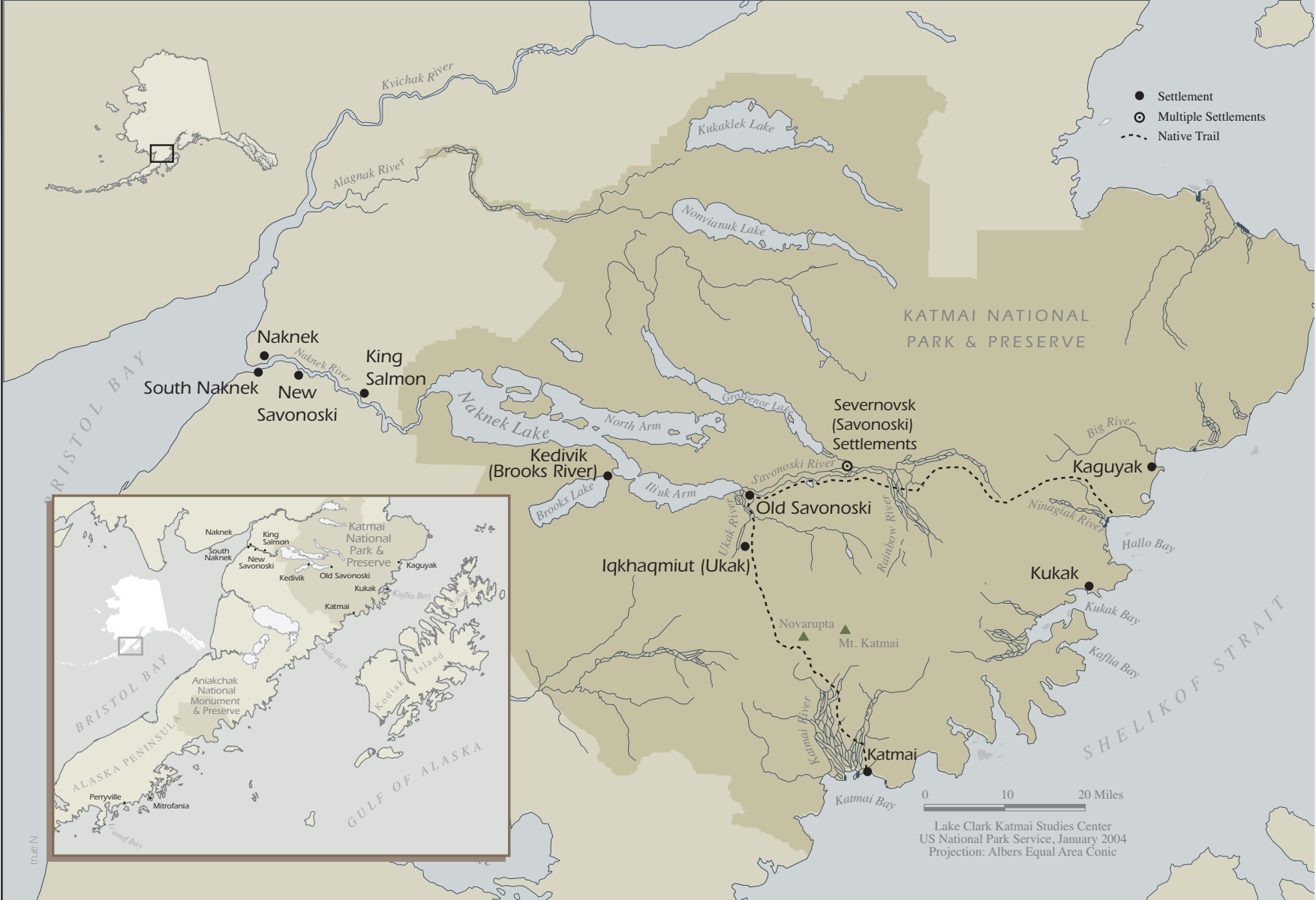
Increasingly severe earthquakes in the days preceding the June 6th eruption led to the complete abandonment of the native villages in the Katmai region.<sup>4</sup> Most families were already in Kodiak or Naknek by late May, as men were employed as fishermen and women worked in the canneries during the salmon runs.<sup>5, 6</sup> Remaining residents of Katmai village and the Severnovsk (Savonoski) settlements fled to Cold Bay (Puale Bay) and to the Bristol Bay coast a few days prior to the main eruption. Yet this was the time of year to begin to lay away stores of dried fish and meat for the winter, so some families were out on the land hunting and fishing and were there to experience the eruption

firsthand. Two families from Katmai village, a large coastal settlement with a trading post and Russian Orthodox Church, were fishing in Kafia Bay, a trip of 35 to 40 miles by kayak northeast of Katmai village.<sup>7</sup> Other families from Kaguyak (Douglas), a village northeast of Kafia, were also putting up fish in the bay. Five people employed by a commercial fishing interest were stationed in Kafia Bay at the time. It was from the fish camp at Kafia, about 32 miles east of Novarupta and in the direct downwind path of the ash fallout, that six-year-old Harry Kaiakokonok witnessed the eruption.

*And then afternoon—sometime in the afternoon—it was just like this, bright sunshine, hot, no wind, that’s when the volcano started. Started snowing like that fine pumice coming down. Make a lot of noise, the size of rice, some of it, some of it smaller, and some of it bigger, and some of it was as big as a kettle or pot. Kafia Bay started to get white gradually. That water*









*used to be blue, flat calm, no wind; and started to get white, white, white, and pretty soon all white and dark, dark came. Dark didn't come all of a sudden, it comes gradually. Getting darker and darker and darker and darker, and pretty soon, pitch black. So black even if you put your hand two or three inches from your face outside you can't see it 'cause it was so dark. ... And then the people started to gather up.<sup>8</sup>*



Closer to the volcano still were residents of the interior Severnovsk (Savonoski) settlements, among them Petr Kayagvak (American Pete) who was in the process of moving his belongings from Iqkhagmiut (Ukak), where his wife Pelegia was born, to Old Savonoski when the eruption started.

*The Katmai mountain blew up with lots of fire and fire came down trail from Katmai with lots of smoke. We go fast Savonoski. Everybody get bidarka (skin boat). Helluva job. We come Naknek one day, dark, no could see. Hot ash fall. Work like hell.<sup>9</sup>*



◀ *“Savonoski” from Jasper Sayre Collection, 1917-1919 National Geographic Expedition.*

▼ *Single-hole skin kayak, photo by P. Hagelbarger, botanist on the 1919 National Geographic Expedition to Katmai, courtesy UAA Archives and Manuscripts Department. Larger two- or three-hatched kayaks were used for hunting young baleen whales in bays, and for sea otter hunting. Until the mid 1890s, nearly every able-bodied man from Katmai, sometimes joined by men from Severnovsk villages, participated in the sea otter hunt in Cold Bay in late May or early June.<sup>39</sup>*



The initial stages of the eruption inspired excitement, not fear, among the children. They began to run up the hillside near their Kafia camp, to get a better look at the “smoky mountain,” where they watched vivid lightning, a rare occurrence here, and felt the earth “never stop moving.”

*And we start to run as hard as we can. We don't run home. We run up the side of high hill. Everybody try to get to top of hill first. All hollering, “Let's go see the mountain.” One of the childrens was blind. He blind all the time. He can't see anything. But he running right by me, and he hollering louder than anybody, “Let's go see the mountain.” Then he fall down, and I help him up and put both his hands on my shoulders.... He run behind me, holding onto my shoulders, hollering loud....We get to top of hill and see sky get black all over, way we looking. All full of lightnings. We don't know what those lightnings are. We don't see no lightnings before. Then our parents start hollering for us to come to our barabaras, and we run back down the hill, that blind boy still holding onto my back.<sup>10</sup>*

The adults rushed to fill available containers with water, and because they had been salting and smoking fish to sell to a trader from Kodiak as well as drying it for their own use, they were somewhat prepared to gather together and outlast the eruption in their recently built homes. Harry Kaiakokonok's parents and uncle had built cabins at Kafia some two years earlier and now spent winters and summers there.<sup>11</sup>

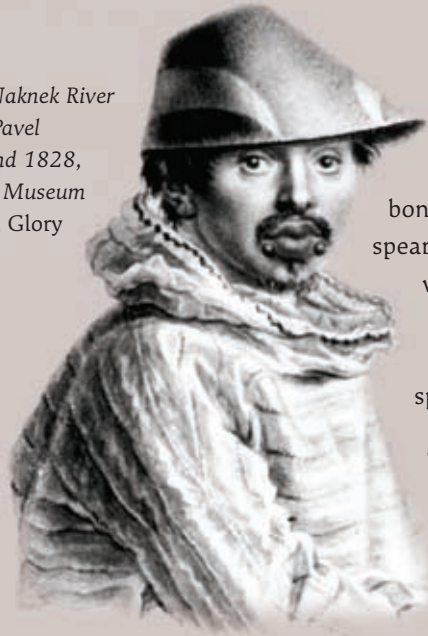
◀ “Baked Mountain”  
Photo courtesy of  
Gary Freeburg.

▼ Old Savonoski waterfront,  
Jasper Sayre Collection,  
1917-1919 National  
Geographic expedition.



► *Man from the Naknek River area drawn by Pavel Mikhailov around 1828, State Historical Museum of Estonia (from Glory Remembered).*

►► *“A Typical Barabara Sod House...” Photograph by W.L. Henning, National Geographic Expedition, courtesy of UAA Archives and Manuscripts Department. When the Katmai refugees were resettled at the new village of Perryville, the government built frame houses for them. They missed the warmth and stability in the wind of their traditional sod houses.*



This was early 20th century America, yet for Katmai people life was a blend of strong traditional ways and modern influences. Rifles were owned—purchased with wages or from the sale of pelts, yet the bow and bone- or iron-tipped arrow were still used for hunting. Traditional nets and spears were preferred for fishing. Harry remembers hunting porpoise in the bay with his father, Vasili, who could “make a noise...call them, right up to the side of the kayak.” He would shoot the porpoise with a rifle, then quickly, before it could sink, he speared it with a traditional wooden spear to keep it afloat.<sup>12</sup>

The ash darkened the sky for three days. This was before “flashlight time,” and had it not been for a big whale that had drifted ashore providing oil for lamps and torches, there would have been no light for the people at Kafia who no doubt wondered whether they might see sunlight again.<sup>13</sup> The ash heated the air and it was difficult to breathe.

*It get hot in those barabaras. We pull off all our clothes. We soak them in water and put them over our face. Those peoples who have mosses in their barabara pour water over those mosses and put them over their nose and mouth so they can breathe. After a while we open the door and try to see out. All black, everywhere. A little bird fly into barabara. He can't see where he go. We childrens wash his eyes with water and he stay in barabara with us.<sup>14</sup>*







Eighteen year-old George Kosbruk, who was also at the Kaflia fishing camp, remembered his first glimpse of the post-eruption world; as the ash settled and light returned, people escaped the cramped and dark confines of their shelters:

*...light is coming. Oh boy, just like snow. Can't see nothing. No kind of tree. All white to mountain. No kind of beach. No bluff. Nothing. All white, the big river. Filled up. No running, the water. Just like cement. That time get hard, boy. Lots of animals that time killed. Lots killed—the bear...ducks and everything.<sup>15</sup>*

Porpoises, birds and fish were floating on ash and pumice several feet deep, choking the bay. There was no drinking water and little to eat. In that first light, the elders got together and chose nine young men, George Kosbruk among them, to paddle three kayaks across Shelikof Strait to Kodiak for help.<sup>16</sup> On Wednesday June 12, the tug *Redondo* loaned to the Coast Guard by Superintendent Blodgett of the St. Paul Kodiak cannery and under the command of Second Lieutenant W. K. Thompson, anchored in Kaflia Bay at 2:30 in the morning.

*Landed and found natives destitute, but apparently in normal health, and very badly frightened. Volcanic ashes had buried village to a depth of three feet on the level, closing all streams and shutting off the local water supply. Salmon were dead in the lake, and as it was apparent that the fish would not return for some time, I gathered all natives, with cooking utensils, bedding, and boats, and placed them on the Redondo. The village was comprised of natives from Cape Douglas to Katmai, seismic disturbances having caused them to abandon their usual*



▲ Hunting hat from Katmai, collected by Il'ia Voznesenskii around 1842, Museum of Anthropology and Ethnography Leningrad (from *Glory Remembered*).

◀ “Baked Mt. Broken Mt. Drainage”  
Photo courtesy of Gary Freeburg.





Katmai people with Rev. A. Petelin.

*camp and seek mutual protection at Kafia Bay. In addition to the refugees, found five natives employed by salmon fishery located at this point. From all information gathered from the head men, I judged that all natives along the coast had been accounted for, and therefore stood out of Kafia Bay at 10:30 p.m. ... At present there are no natives on the mainland between Cape Douglas and Katmai, the region most affected by the eruption, they having been transported to Afognak by the Redondo.*<sup>17</sup>

One month after the eruption, some of the Katmai refugees, 78 in number, boarded the U.S. Revenue Cutter *Manning* to return to the Alaska Peninsula and establish a new village.<sup>18</sup> Senior Captain W. E. Reynolds, commander of the Bering Sea Fleet Revenue-Cutter Service, decided not to attempt to resettle the villages on the Katmai coast and to “centralize” the former residents in a new place, at the head



of Ivanof Bay.<sup>19</sup> The Katmai people were not happy with this selection, citing the rainy weather and concerns about reported winter snow and ice conditions. So, three weeks later and after visiting several potential sites, one was selected that had a beach suitable for landing skin boats, a plentiful supply of driftwood, abundant animal sign, fresh water nearby and well-drained high ground for homes. Located 200 miles southwest of Katmai village and neighboring the former village of Mitrofanina, this new settlement was named Perry (now Perryville) after K. W. Perry, Captain of the *Manning*. Though now far from home, this village was in the familiar shadow of an active volcano, this time it was Mt. Veniaminof which had last erupted just 20 years earlier. Perryville is a successful community of 143 today and remains a seat of Alutiiq culture and language for people of the middle Peninsula.<sup>20</sup>

According to Pelegia Melgenak (American Pete's widow), there were two families that lived at Old Savonoski for a year after the eruption before joining others who had resettled on the lower Naknek River at New Savonoski.<sup>21</sup> She remembered especially how warm the ground and water remained for a year after the eruption; clothes were not needed for warmth, "just like they never have winter." A new chapel was built in New Savonoski, dedicated to Our Lady of Kazan as was its predecessor in Old Savonoski and probably in Iqkhagmiut before that. New Savonoski has since been abandoned for a nearby village, South Naknek, five miles downriver at the mouth of the Naknek River.

The native villages Katmai, Kafliia, and Kaguyak on the Pacific coast, and the Severnovsk settlements Iqkhagmiut, Nunamiut and Kangmiut were

▼ "Katmai people with Rev. A. (Alexander) Petelin" (bearded man in center), 1912. Photo courtesy of the Kodiak Historical Society.

▼ "Caribou carved by Katmai Eskimos" Etholen Collection, National Museum of Finland.





► *Kaguyak (Douglas)  
Russian Orthodox Church  
and cemetery. Photo by  
NPS biologist Lowell  
Sumner, June 1952.*

▼ *“Upper Lethe”  
Katmai National  
Park and Preserve.  
Photograph courtesy  
of Gary Freeburg.*



abandoned during the eruption and were never re-established.<sup>22</sup> These villages had been closely knit culturally by language (Alutiiq, related to Kodiak Islanders), kinship, shared hunting territories, and trade for untold generations. Recent archeological survey along the Savonoski River documented a long-standing pattern of periodic village relocation within drainage systems beginning at least 1,700 years ago.<sup>23</sup> This is in keeping with ethnohistoric records of changing village locations and names throughout the 19th century and until the eruption.<sup>24, 25, 26</sup> Harry Kaiakokonok’s genealogy illustrates the close ties among these villages, with his parents, paternal and maternal grand and greatgrandparents born, married and buried variously in Katmai, Kaguyak (Douglas), Iqkhagmiut (Ukak) and the Severnovsk settlements.<sup>27</sup>

A network of trails, along waterways and over mountain passes, further articulated the relationships among these villages as well as use of this broad region as a home territory. As a young man, George Kosbruk remembers kayaking routinely from Katmai village, to Kukak and

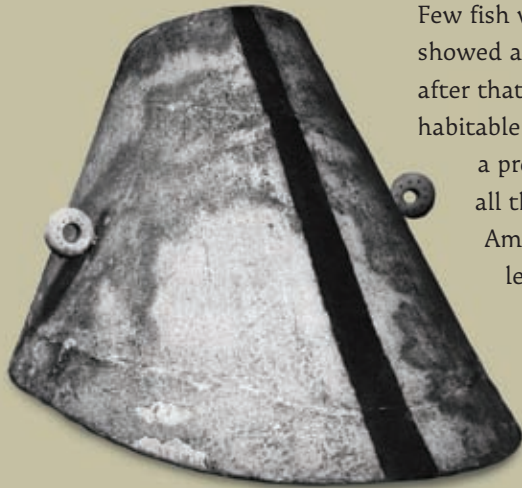
Kafliia Bays, north to Kaguyak, from there to Kodiak, or he would go south to the Chignik area.<sup>28</sup> He would also take his single-hole kayak up the Katmai River, over Katmai Pass and down into the Naknek Lake system and Brooks River (Kedivik), and from there he could access the Bristol Bay coast. Katmai Pass was used at the turn of the century by the rare adventurer, by traders, and for a short period as a short-cut across the peninsula by prospectors on their way to Nome. Another important native trail connected the inhabitants of the Severnovsk villages to Pacific coast settlements via the Savonoski and Ninagiak River watersheds.



► *“Lower Lethe”  
Katmai National Park  
and Preserve, photograph  
courtesy of Gary Freeburg.*



▼ *Hunting hat collected on  
the Alaska Peninsula in the  
1800s, Peabody Museum  
of Natural History, Yale  
University, New Haven,  
Connecticut (from Glory  
Remembered).*



By some accounts, the eruption did not have a significant impact on vegetation or on large terrestrial and marine mammals outside the immediate scene of the eruption, but seriously affected other subsistence resources such as small land mammals, birds and fish.

Few fish were able to spawn in the ash-filled streams, and the recorded salmon catch on Kodiak showed a significant decline between 1915 and 1920. There was a return to normal numbers after that, and it is estimated that all areas occupied prior to the eruption may have been habitable 10 to 20 years after the eruption.<sup>29</sup> By that time, however, President Wilson had signed a proclamation establishing Katmai National Monument on September 24, 1918, inclusive of all the above-mentioned village sites. Annual, month-long bear hunts along the Savonoski by American Pete and other former residents were re-established by this time, and continued at least until 1939.<sup>30</sup> Salmon harvesting within the Naknek Lake system, particularly along Brooks River remained active through the 1960s and is an important interest today. But the likelihood of returning permanently to live was summarized by American Pete in 1918, “Never can go back to Savonoski to live again. Everything ash.”<sup>31</sup>

Harry Kaiakokonok became chief of Perryville in 1930 and was a church leader for many years before becoming a priest. His early accounts of the eruption, written down some 30 years after the event, were described as “wonderfully articulate” with Harry “bounding from his chair...to illustrate salient points with superb histrionics and graphic pantomime.”<sup>32</sup> Interviewed by National Park Service ranger Michael Tollefson and archeologist Harvey Shields another 30 years later, his stories had become more reflective and detailed. The birthplaces, former homes, camp sites and burial places of Harry’s family and kinsmen all lie within the boundaries of what is now Katmai National Park and Preserve. When questioned about the establishment of the park, Harry asked first whether hunting would be allowed there. When told it would not be allowed, he said, “That’s a good way to preserve lots of animals for the future.”<sup>33</sup>



▲ *Fish drying racks at the mouth of Brooks River. Photo by Victor Cahalane, September 1940.*



▲ Father Harry Kaiakokonok, his wife Jennie and foster son Tommy. Photo taken in King Salmon, Alaska, April 29, 1975.

▶ “Erosion Near Lethe”  
Photo courtesy of Gary Freeburg.

Although permanent native villages in Katmai were eliminated by the eruption, strong, enduring ties to their homeland are retained by today’s Katmai descendants. A regrettable consequence of village abandonment was the loss of carved wooden ceremonial masks from Old Savonoski.

*On our trips back to our ancestral homeland near Brooks Camp...in what is now Katmai National Park, as far back as I can remember, our father Trefon Angasan, would look toward Old Savonoski where he was born, proclaiming, “There are masks in the caves.” Anyone within hearing range would smile with contentment that the masks our ancestors carved and used in ceremonies were safely tucked away. In 1993 (we learned) that Harry Featherstone removed the masks*

*in 1921. The news violated our sacred trust. President Wilson had declared the area a National Monument in 1918. How could this happen?<sup>34</sup>*

Harry Featherstone was a trapper who had built a cabin at the head of Naknek Lake. Documents indicate that Featherstone decorated the walls of his cabin with 35 masks that he had removed from an overhang near Old Savonoski.<sup>35</sup> Fortunately, he gave seven of the masks to a Naknek schoolteacher, who in turn placed them in the Alaska Territorial Museum, now the Alaska State Museum in Juneau. The whereabouts of the others is unknown and remains one of the deepest concerns of the Katmai descendants.



▶ *Microblades, microblade cores and other tools from the Alaska Peninsula, dating from 9,000 years ago.*

▶▶ *The thick layer of white ash from the 1912 eruption caps the sediments above a 500 year old house excavated by archeologists at Brooks River, Katmai National Park and Preserve, summer 2003.*



Today Brooks River is the heart of a nationally significant cultural area designated a National Historic Landmark Archeological District in 1993.<sup>36</sup> Clustered on former river and lake terraces are dimples in the ground surface representing over 800 prehistoric house depressions, infilled by post-habitation ashfall and sedimentation. These villages and camps are as old as 4,500 years and as recent as 300 years old; some settlements were as large as Katmai village, Kaguyak and the Savonoski villages in their prime.

Archeological investigations began along Brooks River in 1952<sup>37</sup>

and continue today, with National Park Service excavations at the “Cut Bank Site,” a 500-year-old village rapidly eroding along the bank of the river below the popular bear-viewing falls. While the unique and fascinating culture history is renowned among archeologists, few visitors to Brooks Camp are aware of it.

The great eruption of 1912 deposited over 600 feet of ash in a once verdant, resource-rich valley, effectively sealing its prehistoric record for as many more lifetimes as those already spent there. We know from coastal sites and those scattered throughout the present Park, that this valley had been home to people as early as 9,000 years ago. On a windswept ridge near the outer edge of the Valley of 10,000 Smokes, the small, sharp stone blades, called microblades, remaining from a small hunting camp occupied millennia ago, attest to the story buried beneath the ash in the Valley.







The flu epidemic of 1918 took a heavy toll among the Katmai people, prompting one historian to predict that “if present population trends continue, the name Savonoski may...be kept alive in the future only in literature and as a historic site in Katmai National Monument.”<sup>38</sup> To make sure that never happens, The Council of Katmai Descendants formed as a group in 1994 dedicated to the purpose of preserving their members’ cultural heritage primarily through youth education. The group represents the descendants of the Katmai people scattered by the 1912 eruption and who today are represented by over 30 separate geographically-based native organizations.



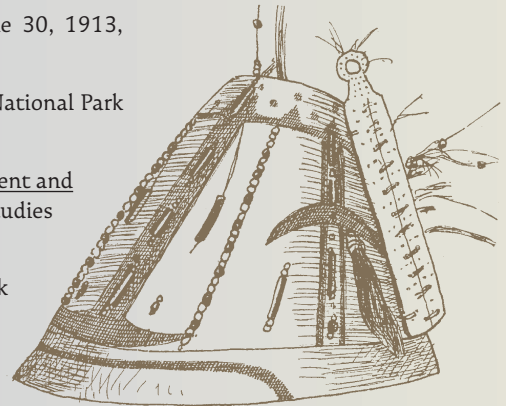
- ▲ “Katmai Village after the Eruption, Looking North toward Katmai Volcano, August 13, 1912,” taken by G. C. Martin, courtesy of National Geographic Society.
- ◀ Katmai Village cemetery, Jasper Sayre Collection, 1917-1919 National Geographic expedition.



## *Endnotes:*

- <sup>1</sup> Letter from Tom Jessee to Dr. Luther Cressman, June 12, 1961, on file at the Lake Clark Katmai Studies Center, Anchorage, Alaska. Khariton [Hariton] Kaiakhvagnak (Harry Kaiakokonok) was identified in the Orthodox Church records by Katherine Arndt, October 2000.
- <sup>2</sup> Fierstein J. and W. Hildreth, Preliminary Volcano-Hazard Assessment for the Katmai Volcanic Cluster, Alaska, U.S. Geological Survey Open-File Report 00-489, 2001:28.
- <sup>3</sup> Khariton [Hariton] Kaiakhvagnak (Harry Kaiakokonok) interview with Michael Tollefson, April 29, 1975, on file at the Lake Clark Katmai Studies Center, Anchorage, Alaska.
- <sup>4</sup> Griggs, R. F. The Valley of Ten Thousand Smokes. National Geographic Society, Washington, D.C., 1922:17.
- <sup>5</sup> Davis 1961 Mount Katmai, Alaska Eruption. Transcript of a tape recording with Pelegia Melgenak made in July-August 1961 for the National Park Service. Eugene, Department of Anthropology, University of Oregon, on file at the Lake Clark Katmai Studies Center, Anchorage, Alaska.
- <sup>6</sup> Hussey, J. A. 1971 Embattled Katmai; Katmai National Monument Historic Resource Study, National Park Service, San Francisco, p.329.
- <sup>7</sup> Khariton [Hariton] Kaiakhvagnak (Harry Kaiakokonok) and George Kosbruk interview with Michael Tollefson and Harvey Shields, October 22, 1975, on file at the Lake Clark Katmai Studies Center, Anchorage, Alaska.
- <sup>8</sup> Khariton [Hariton] Kaiakhvagnak (Harry Kaiakokonok) interview with Michael Tollefson, April 29, 1975, on file at the Lake Clark Katmai Studies Center, Anchorage, Alaska.
- <sup>9</sup> Griggs, R. F. The Valley of Ten Thousand Smokes. National Geographic Society, Washington, D.C., 1922:17.
- <sup>10</sup> Letter from Tom Jessee to Dr. Luther Cressman, June 12, 1961, on file at the Lake Clark Katmai Studies Center, Anchorage, Alaska.

- <sup>11</sup> Khariton [Hariton] Kaiakhvagnak (Harry Kaiakokonok) interview with Michael Tollefson, April 29, 1975, on file at the Lake Clark Katmai Studies Center, Anchorage.
- <sup>12</sup> Ibid.
- <sup>13</sup> Khariton [Hariton] Kaiakhvagnak (Harry Kaiakokonok) interview with Michael Tollefson, April 29, 1975, on file at the Lake Clark Katmai Studies Center, Anchorage.
- <sup>14</sup> Letter from Tom Jessee to Dr. Luther Cressman, June 12, 1961, on file at the Lake Clark Katmai Studies Center, Anchorage, Alaska.
- <sup>15</sup> George Kosbruk and Fred Shangin interview with Michael Tollefson and Harvey Shields, October 21, 1975, on file at the Lake Clark Katmai Studies Center, Anchorage, Alaska.
- <sup>16</sup> Khariton [Hariton] Kaiakhvagnak (Harry Kaiakokonok) interview with Michael Tollefson, April 29, 1975, on file at the Lake Clark Katmai Studies Center, Anchorage.
- <sup>17</sup> Annual Report of the United States Revenue Cutter Service for the Fiscal Year ending June 30, 1912, Washington Government Printing Office, 1913:125.
- <sup>18</sup> Annual Report of the United States Revenue Cutter Service for the Fiscal Year ending June 30, 1913, Washington Government Printing Office, 1913:93-94.
- <sup>19</sup> Hussey, J. A. 1971 Embattled Katmai; Katmai National Monument Historic Resource Study, National Park Service, San Francisco, p.362.
- <sup>20</sup> Morseth, M., 1998 Puyulek Pu'irtuq! The People of the Volcanoes, Aniakchak National Monument and Preserve Ethnographic Overview and Assessment, National Park Service, Lake Clark Katmai Studies Center, Anchorage, Alaska, reprinted 2003.
- <sup>21</sup> Davis 1961 Mount Katmai, Alaska Eruption. Transcript of a tape recording with Pelegia Melgenak made in July-August 1961 for the National Park Service. Eugene, Department of Anthropology, University of Oregon, on file at the Lake Clark Katmai Studies Center, Anchorage, Alaska.



► “Snowfield Near  
Knife Creek”  
Photo courtesy of  
Gary Freeburg.

- <sup>22</sup> Iqkhagmiut, also known as Ikak and Ukak on American maps, is last mentioned in historic records in 1909, indicating that the population had shifted to the Severnovsk settlements (Nunamiut and Kanigmiut). Black, Lydia T. 1984 Letter Report to J. W. Tanner, Alaska Regional Office, National Park Service, on review of records of the Alaska Russian Church Collection, dated July 31, on file at the Lake Clark Katmai Studies Center, Anchorage, Alaska.
- <sup>23</sup> Hilton, M. R. November, 2002, Results of the 2001 Interior Rivers Survey: Reconnaissance-Level Pedestrian Survey of Alagnak and Savonoski River Corridors, Katmai National Park and Preserve, Alaska. On file at the Lake Clark Katmai Studies Center, Anchorage, Alaska.
- <sup>24</sup> D. E. Dumond January 8, 1988 Final Report to NPS on Field and Library Work Conducted in or related to Katmai National Park and Preserve. On file, Lake Clark Katmai Studies Center, Anchorage, Alaska.
- <sup>25</sup> Black, Lydia T. 1984 Letter Report to J. W. Tanner, Alaska Regional Office, National Park Service, on review of records of the Alaska Russian Church Collection, dated July 31, on file at the Lake Clark Katmai Studies Center, Anchorage, Alaska.
- <sup>26</sup> Davis, W. S. 1954 Archaeological Investigations of Inland and Coastal Sites of the Katmai National Monument, Alaska. Report to the National Park Service. Department of Anthropology, University of Oregon, Eugene.
- <sup>27</sup> Arndt, K. Letter to Jeanne Schaaf on the Genealogy of Harry Kaiakokonok (Khariton Kaiakhvagnak) dated October 17, 2000, on file at the Lake Clark Katmai Studies Center, Anchorage, Alaska.
- <sup>28</sup> George Kosbruk and Fred Shangin interview with Michael Tollefson and Harvey Shields, October 21, 1975, on file at the Lake Clark Katmai Studies Center, Anchorage, Alaska.
- <sup>29</sup> Dumond, D.E. 1979 People and Pumice on the Alaska Peninsula. In Volcanic Activity and Human Ecology, edited by P.D. Sheets and D. K. Grayson, pp. 373-392. Academic Press, New York.
- <sup>30</sup> Hussey, J. A. 1971 Embattled Katmai; Katmai National Monument Historic Resource Study, National Park Service, San Francisco, p.369.

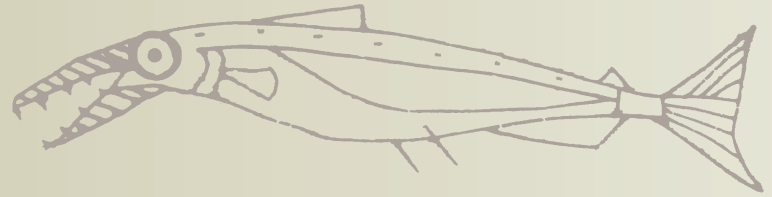








- <sup>31</sup> Griggs, R. F. The Valley of Ten Thousand Smokes. National Geographic Society, Washington, D.C., 1922:17. The original quote in Griggs is printed “...never go back to libe there again...”
- <sup>32</sup> Letter from Tom Jessee to Dr. Luther Cressman, June 12, 1961, on file at the Lake Clark Katmai Studies Center, Anchorage, Alaska.
- <sup>33</sup> Khariton [Hariton] Kaiakhvagnak (Harry Kaiakokonok) interview with Michael Tollefson, October 22, 1975, on file at the Lake Clark Katmai Studies Center, Anchorage, Alaska.
- <sup>34</sup> Nielsen, M.J. “The Missing Masks of Savonoski, Katmai Country,” May 11, 2001, on file at the Lake Clark Katmai Studies Center, Anchorage.
- <sup>35</sup> Clemens, J. and F. Norris 1999 Building in an Ashen Land: Historic Resource Study of Katmai National Park and Preserve, National Park Service, Alaska Support Office, Anchorage, p.125.
- <sup>36</sup> McClenahan, Patricia, Brooks River Archeological District National Historic Landmark Nomination, March 24, 1989.
- <sup>37</sup> Dumond, D.E. 1981 Archaeology on the Alaska Peninsula: The Naknek Region 1960-1975, University of Oregon Anthropological Papers No. 21, Eugene Oregon.
- <sup>38</sup> Hussey, J. A. 1971 Embattled Katmai; Katmai National Monument Historic Resource Study, National Park Service, San Francisco, p.369.
- <sup>39</sup> Arndt, Katherine, “Katmai Station, 1883-1889: The Journals of Nikolai Fomin,” April 1999 paper presented at Alaska Anthropological Association 26th Annual Meeting, Fairbanks, Alaska.



◀ *Old Savonoski Village Site, 2001, NPS photo.*



## *Further Reading:*

The Eskimos and Aleuts by Don E. Dumond, Thames and Hudson, London, revised edition 1987.

Looking Both Ways: Heritage and Identity of the Alutiiq People. Aron L. Crowell, Amy F. Steffian and Gordon L. Pullar editors, University of Alaska Press, Fairbanks 2001.

Making History: Alutiiq/Sugpiaq Life on the Alaska Peninsula by Patricia H. Partnow, University of Alaska Press, Fairbanks 2001.

Puyulek Pu'irtuq! The People of the Volcanoes: Aniakchak National Monument and Preserve Ethnographic Overview and Assessment by Michele Morseth, U. S. National Park Service, 2nd printing 2003.

### **For additional copies:**

Katmai National Park and Preserve  
P.O. Box 7, King Salmon, AK 99613  
907/ 246-3305

**or**

Lake Clark Katmai Studies Center  
4230 University Drive Suite 311, Anchorage, AK 99508  
907/ 271-1384

- ◀ *“Valley of 10,000 Smokes” Photo courtesy of Mike Hilton.*
- ▶ *“An Eskimo bidarka from Pavik,” by Emery C. Kolb, 1919 National Geographic Expedition, Jasper Sayre Collection.*



